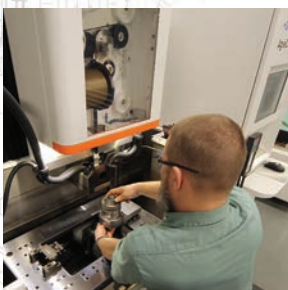
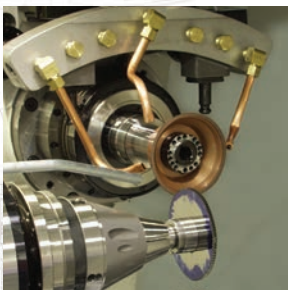
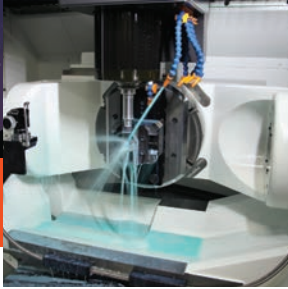


# ASPECT

PRECISION MANUFACTURING



Aspect's line-up of manufacturing technologies include milling, turning, EDM, grinding, fabrication, and finishing processes. An impressive array, that is more diverse than other shops, all within a facility that is large enough to fulfill your needs; yet, small enough to care. We continue to add new technologies and techniques to ensure Aspect always has the latest equipment and processes in place to provide our customers with parts for the next generation of aircraft.

We specialize in low to medium volume production. If you only need a single part for a special application or as a prototype, that is where Aspect will shine. Expedited deliveries are happily accepted as a team challenge.

Excellence in high-tech engineering drives technological advances at Aspect. Our continuous improvement and lean manufacturing principles create time and material savings that provide our customers with the lowest possible costs by maximizing quality, efficiency, and performance. Our CMM inspections are completed in a controlled environment to assure the highest accuracy possible.

Aspect's exceptional project management is accomplished by highly skilled professionals with decades of experience. Our responsive staff keeps you informed of your project's status at all steps of the process.

Aspect is a vertically integrated company with the support of Hydromat Inc., the premier rotary transfer manufacturing company in North and South America. Hydromat has 40 years of ultra-precision machining and manufacturing experience with an ISO 9001:2015 Quality Management Systems regulatory requirements.

At Aspect, just meeting your standards is never enough. We strive to exceed your expectations at all levels. Contact us. Send a part drawing or an RFQ. We will start the process of bringing you the finest product at an impressive price point.

## Capabilities and Equipment



### 3D PRINTING AND RAPID PROTOTYPING

- Fortus 250mc (FDM, ABS)

### MACHINING

#### EDM

- Agie Agiecut Progress 2 Wire EDM ~~~~~ 360 x, 250 y, 250 z
- Charemillles CUT 200 SP Wire EDM ~~~~~ 360 x, 220 y, 250 z
- Agie ACE FUTURA V 2PM Ram EDM ~~~~~ 550 x, 450 y, 400 z

#### Milling

- Mazak FJV-35/60 ~~~~~ 1740 x, 650 y, 860 z
- Okuma M460-VE ~~~~~ 762 x, 460 y, 460 z
- Okuma M460-VE 5AX ~~~~~ 762 x, 460 y, 460 z
- Haas TM-2P ~~~~~ 1016 x, 406 y, 406 z
- FANUC ROBODRILL  $\alpha$ -D14MiA5 ECO ~~~~~ 650 x, 440 y, 430 z

#### Turning

- Mazak Super Quick Turn 250 ~~~~~ 380  $\varnothing$ , 550 z
- Mori Seiki NL2500Y/700 ~~~~~ 350  $\varnothing$ , 740 z
- Mori Seiki T4250/1000SZ ~~~~~ 350  $\varnothing$ , 1027 z
- Mazak Hyper Quadrex ~~~~~ 450  $\varnothing$ , 1900 z

### GRINDING

#### CNC Cylindrical Grinding

- Studer S-145 Cylindrical Grinder ~~~~~ I.D. 3mm-120mm  $\varnothing$ , O.D. 1mm-300mm  $\varnothing$

#### CNC Surface Grinding

- Blohm Surface Grinder ~~~~~ 305 x, 355 y, 305 z
- ELB Surface Grinder ~~~~~ 305 x, 610 y, 305 z

#### CNC Tool Grinding

- Anca TX7 ~~~~~ 1mm-38mm  $\varnothing$
- Anca MX7 with FANUC loading robot ~ 1mm-19mm  $\varnothing$

#### CNC Centerless Grinder

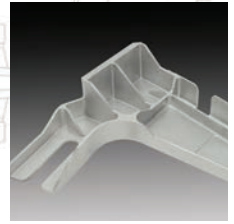
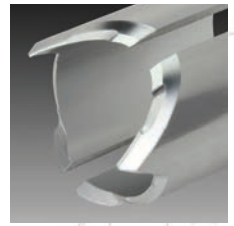
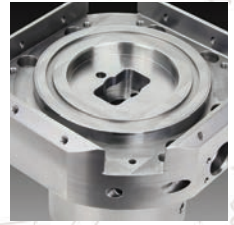
- TRU-TECH ~~~~~ 3-5mm  $\varnothing$  x 150mm z

### QUALITY ASSURANCE

- Zeiss Contura CMM
- Zeiss C700 CMM
- Zeiss Prismo CMM
- Starrett HDV400 Comparator

### FABRICATION

- AccurPress 100 Ton CNC Press Break – 8ft bed
- AccurShear .250 Capacity Shear – 10ft bed
- Eagle Downdraft Spray / Bake Paint Booths



14 ft 0 in (4.26 m)

55 ft 9 in (17.00 m)

ASPECT Precision Manufacturing

11600 Adie Road  
St. Louis, MO 63043

Contact:

314.810.3983

[aspect@hydromat.com](mailto:aspect@hydromat.com)

[www.aspectprecision.com](http://www.aspectprecision.com)